

**SEMESTRAL ASSESSMENT 1**

**SCIENCE**

**12 MAY 2016**

**BOOKLET A**

---

NAME: \_\_\_\_\_ (     )

CLASS: Primary 3 (     )

20 questions

30 marks

Total Time for Booklets A & B: 1 h

DO NOT OPEN THIS BOOKLET UNTIL YOU ARE TOLD TO DO SO.

FOLLOW ALL INSTRUCTIONS CAREFULLY.

For each question from 1 to 20, four options are given. One of them is the correct answer. Make your choice (1, 2, 3 or 4) and shade the correct oval (1, 2, 3 or 4) on the Optical Answer Sheet (OAS). Questions 1 to 10 carry 1 mark each. Questions 11 to 20 carry 2 marks each. **(30 marks)**

---

**1** Which one of the following characteristics is correct for all living things?

- (1) They increase in size.
- (2) They give birth to their young alive
- (3) They can move from place to place
- (4) They only need air and water to survive.

**2** Which of the following statements are correct for all mammals?

- A They lay eggs.
- B They have hair.
- C They live on land.
- D They suckle their young.

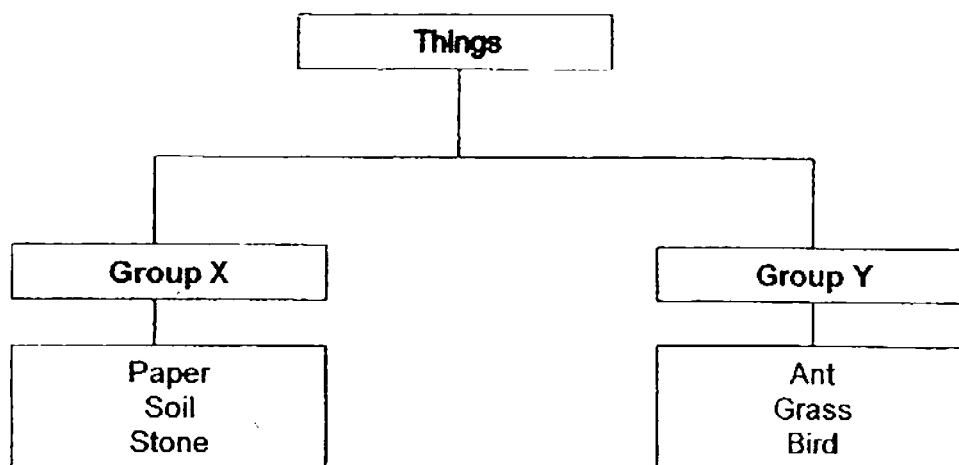
- (1) A and B only
- (2) B and C only
- (3) A and D only
- (4) B and D only

**3** Which of the following statements show that living things respond to changes around them?

- A An earthworm moving away from light
- B A girl putting on a jacket in a cold room.
- C The leaves of a plant closing when touched

- (1) A and B only
- (2) B and C only
- (3) A and C only
- (4) A, B and C

- 4 Study the classification chart below.



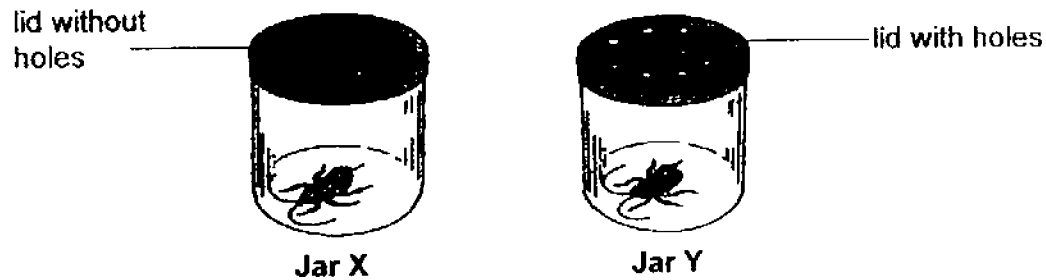
Which of the following can be grouped correctly into Group X and Group Y?

	Group X	Group Y
(1)	marble	water
(2)	hibiscus plant	marble
(3)	toy car	mushroom
(4)	toadstool	sparrow

- 5 Which animal is **wrongly** matched to its group?

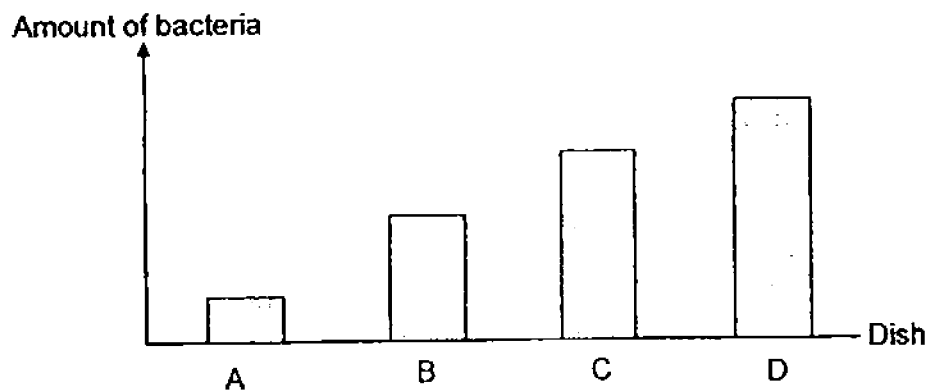
	Group	Animal
(1)	birds	chicken
(2)	insects	grasshopper
(3)	reptiles	frog
(4)	mammals	whale

- 6 Carol placed one cockroach each in two jars, X and Y, as shown below. A few weeks later, she observed that the cockroach in Jar X had died.



Which characteristics of living things does this experiment show?

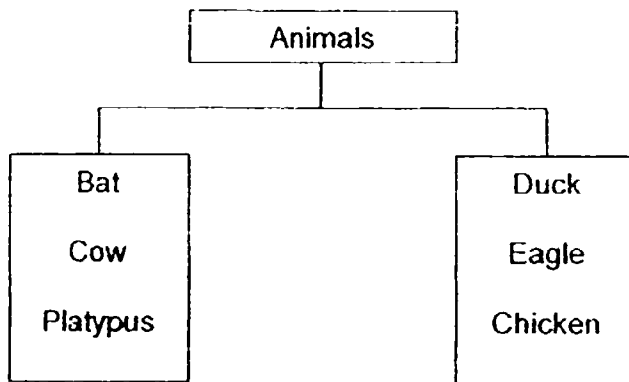
- (1) Living things grow.
  - (2) Living things reproduce.
  - (3) Living things need air to survive.
  - (4) Living things can move by themselves.
- 7 The same amount of Bacteria X was grown in four dishes containing different types of food. The bar graph shows the amount of bacteria on the dishes after some time.



In which dish did bacteria X grow best?

- (1) A
- (2) B
- (3) C
- (4) D

8 Study the classification chart below.



These animals are classified according to \_\_\_\_\_.

- (1) how they move
- (2) their body covering
- (3) how they reproduce
- (4) their number of legs

9 Which one of the following is correct about bacteria?

- (1) Bacteria are all harmful.
- (2) Bacteria do not reproduce.
- (3) Bacteria do not make their own food.
- (4) Bacteria do not respond to changes around them.

10 Four boys each made a statement about fungi.

Alex : All fungi are edible.  
Ben : All fungi are harmful.  
Charles : All fungi can be seen with our naked eye.  
David : Fungi feed on both dead and living things for food.

Which boy made the correct statement?

- (1) Alex
- (2) Ben
- (3) Charles
- (4) David

- 11 James put 6 tadpoles in an aquarium and recorded the number of tadpoles that were alive in the aquarium for a week in the table below.

On day 7, James found 6 frogs in the aquarium and no tadpole.

Time	Number of tadpoles
Day 1	6
Day 4	6
Day 7	0

Based on the information given in the table, which one of the following statements is correct about the tadpoles?

- (1) They will die
- (2) They will grow.
- (3) They can reproduce.
- (4) They need air, food and water to survive.

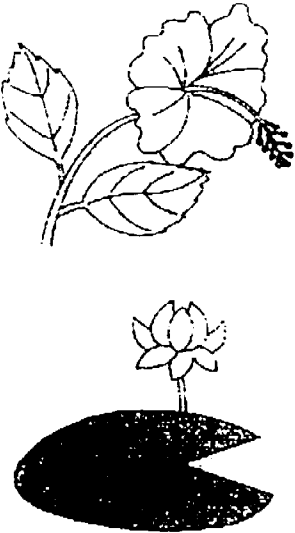
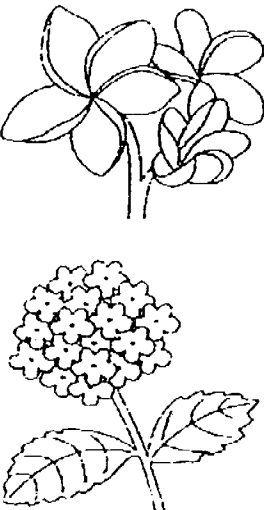
- 12 Study the table below.

Group A	Group B
bird's nest fern	chilli
staghorn fern	watermelon

Which one of the following is correct?

	Group A	Group B
(1)	produce flowers	do not produce flowers
(2)	reproduce by spores	reproduce by seeds
(3)	cannot make their own food	can make their own food
(4)	cannot be seen with the naked eye	can be seen with the naked eye

- 13 John classified some flowers into two groups, A and B, as shown below.

Group A	Group B
	

Which of the following flowers can be classified in Group A?



Flower W



Flower X



Flower Y



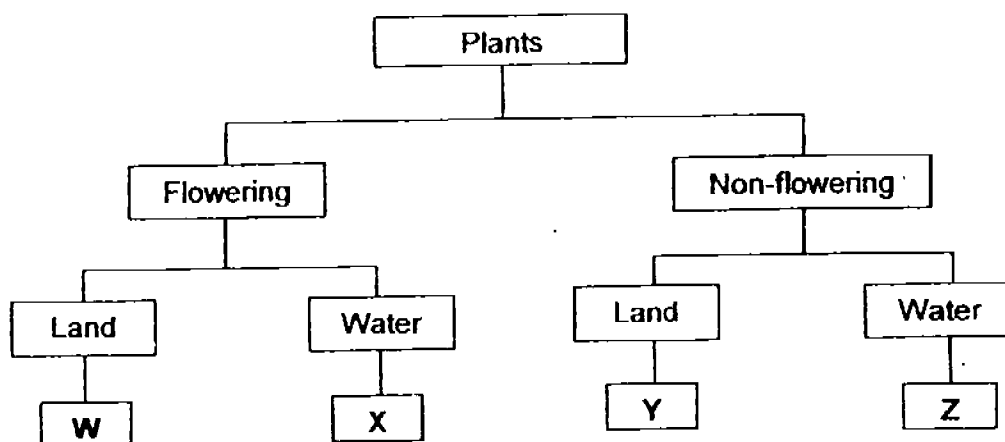
Flower Z

- (1) W and Y only
- (2) X and Z only
- (3) X, Y and Z only
- (4) W, X and Z only

- 14 Samuel observed 2 plants, A and B, in the Science garden and recorded his observations in the table below.

Plant A	Plant B
Bears fruits	Does not bear fruits
Grows on land	Grows in water

He later classified the plants into the classification chart below.



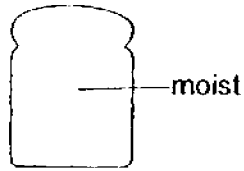
Where should Samuel classify Plant A and Plant B?

	Plant A	Plant B
(1)	W	X
(2)	X	Y
(3)	Y	Z
(4)	W	Z



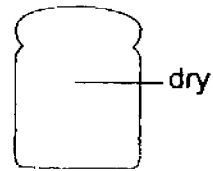
- 15 James placed a loaf of bread each on four plates. He then placed them in different places as shown below.

**Set-up A**



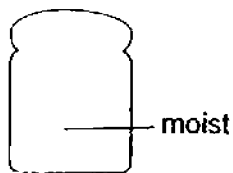
In a refrigerator

**Set-up B**



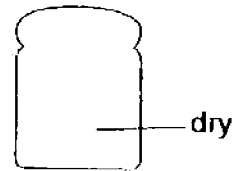
In a refrigerator

**Set-up C**



In the classroom

**Set-up D**



In the classroom

In which set-up will the bread become mouldy the fastest?

- (1) Set-up A
- (2) Set-up B
- (3) Set-up C
- (4) Set-up D

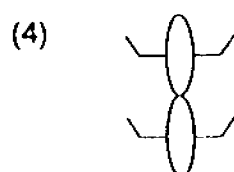
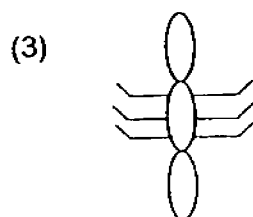
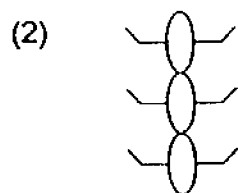
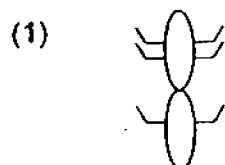
- 16 The table below shows the characteristics of two animals E and F.

Animal	Number of legs				Method of reproduction	
	0	2	4	6	Lays eggs	Gives birth to young alive
E			√			√
F	√				√	

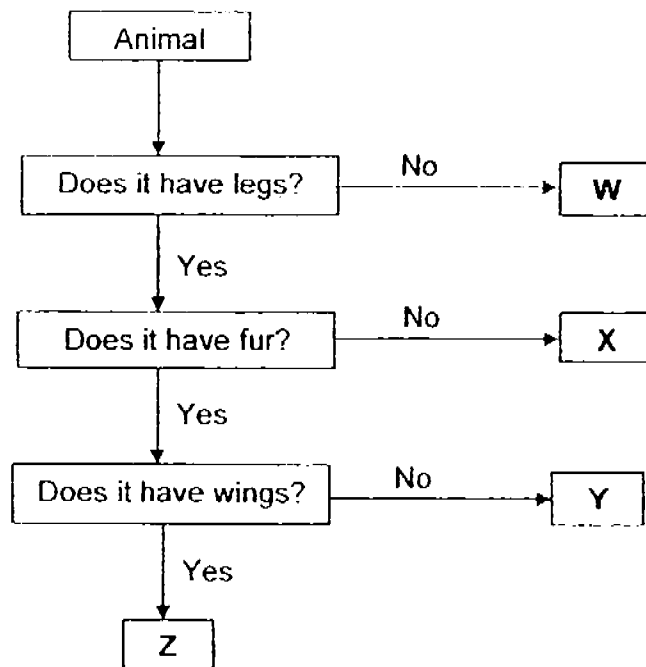
What outer body coverings will animals E and F most likely have?

	Animal E	Animal F
(1)	hair	scales
(2)	feathers	hair
(3)	moist skin	hair
(4)	hair	feathers

- 17 Which of the following correctly represents an insect?



18 Study the flow chart below.

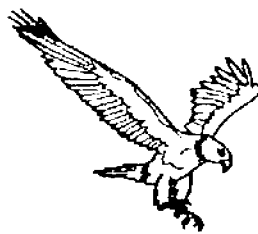


Which letter best represents a bear?



- (1) W
- (2) X
- (3) Y
- (4) Z

- 19 Eric had to classify the ~~four~~<sup>three</sup> animals shown below.



eagle

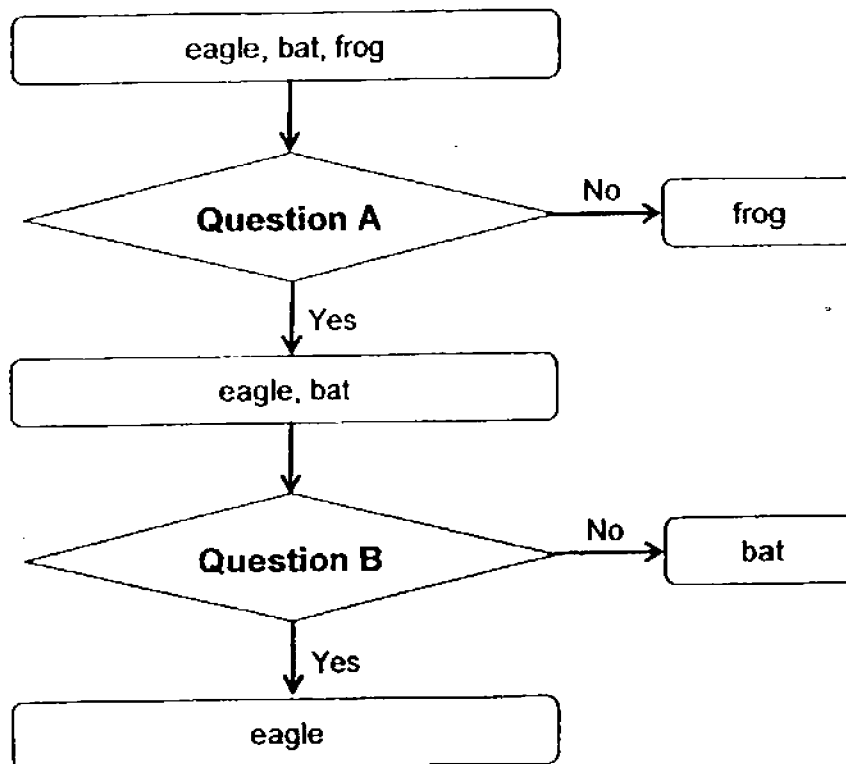


bat



frog

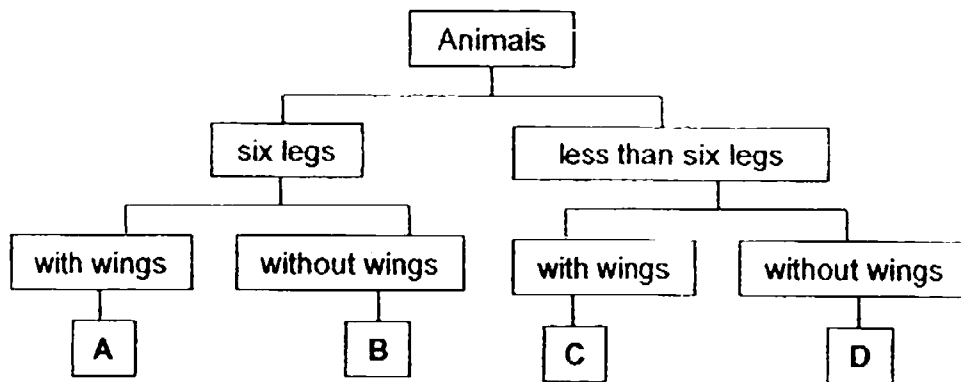
He classified them with the help of the chart below.



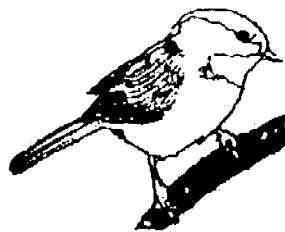
What were the questions, A and B?

	Question A	Question B
(1)	Does it lay eggs?	Does it have wings?
(2)	Does it have wings?	Does it live in water?
(3)	Does it live on land only?	Does it lay eggs?
(4)	Does it have two legs?	Does it live in water?

20 Study the chart below.



Which letter represents Animal X?



Animal X

- (1) A
- (2) B
- (3) C
- (4) D

End of Booklet A

**SEMESTRAL ASSESSMENT 1**

**SCIENCE**

**12 MAY 2016**

**BOOKLET B**

NAME: \_\_\_\_\_ (    )

CLASS: Primary 3 (    )

8 questions

20 marks

Total Time for Booklets A & B: 1 h

DO NOT OPEN THIS BOOKLET UNTIL YOU ARE TOLD TO DO SO.  
FOLLOW ALL INSTRUCTIONS CAREFULLY.

BOOKLET A: \_\_\_\_\_ / 30

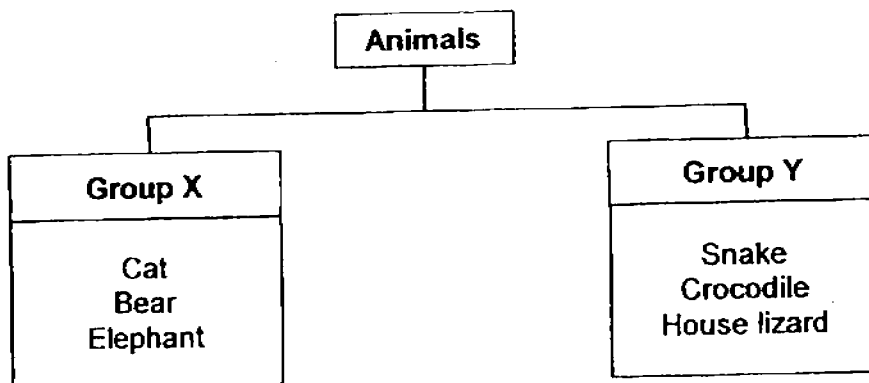
BOOKLET B: \_\_\_\_\_ / 20

TOTAL: \_\_\_\_\_ / 50

PARENT'S SIGNATURE: \_\_\_\_\_

For questions 21 to 28, write your answers in this booklet. The number of marks available is shown in brackets [ ] at the end of each question or part question. **(20 marks)**

- 21 The classification table below classifies six animals according to their method of reproduction.



- (a) Give a suitable heading for [1]

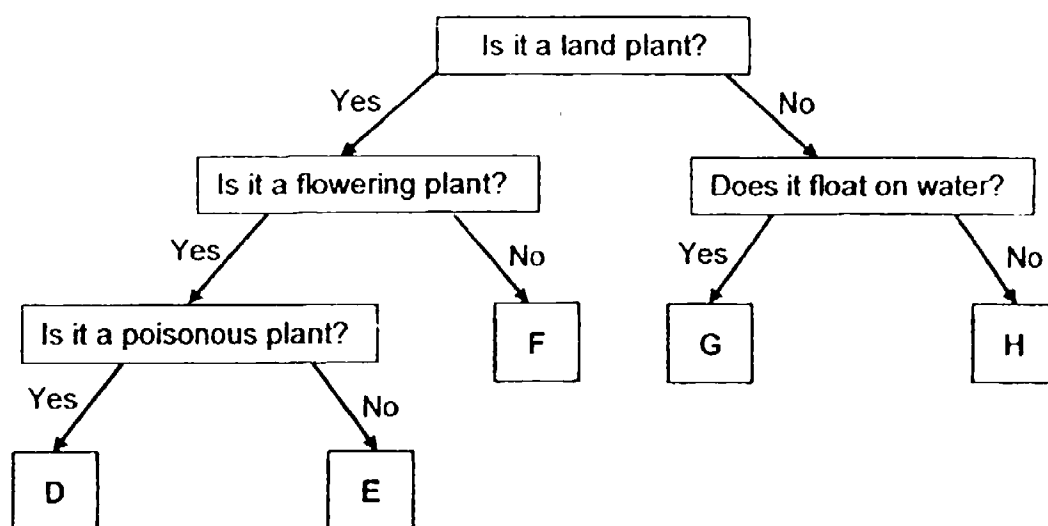
Group X: \_\_\_\_\_

Group Y: \_\_\_\_\_

- (b) In which group (X or Y) should a turtle be classified under? [1]

\_\_\_\_\_

22 Study the flowchart below.



(a) Based on the flowchart, state two similarities between Plant D and Plant E. [1]

(i) \_\_\_\_\_

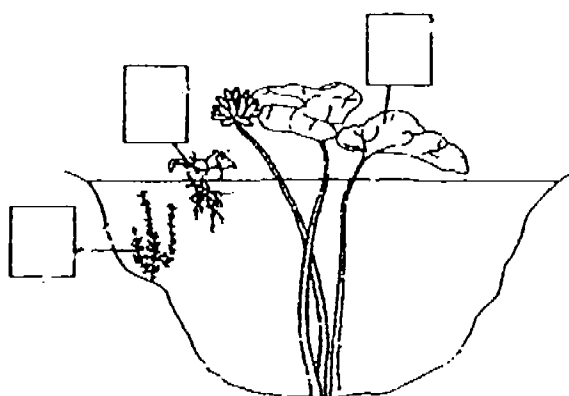
(ii) \_\_\_\_\_

(b) Based on the flowchart, state one difference between Plant F and Plant G. [1]

\_\_\_\_\_

\_\_\_\_\_

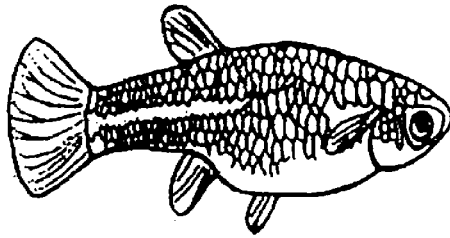
(c) Which of the following can possibly be Plant H? [1]  
Place a tick (✓) in the correct boxes provided.



	3
--	---



23 Study Animal X below.



Animal X

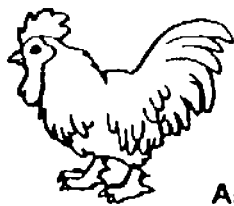
(a) In which animal group will Animal X be classified in? [1]

\_\_\_\_\_

(b) Give a reason for your answer. [1]

\_\_\_\_\_

Compare Animal Y below.



Animal Y

(c) State one similarity and one difference between Animal X and Animal Y. [2]

Similarity: \_\_\_\_\_

\_\_\_\_\_

Difference: \_\_\_\_\_

\_\_\_\_\_

24 Julia observed some organisms and classified them in the table below.

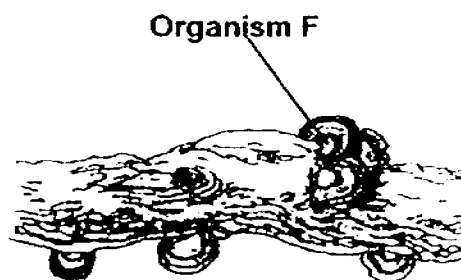
Group X	Group Y
rose	yeast
sunflower	mould

(a) Give suitable headings for Group X and Group Y. [1]

Group X : \_\_\_\_\_

Group Y : \_\_\_\_\_

Compare organisms E and F as shown below.



(b) State one similarity between Organism E and Organism F. [1]

\_\_\_\_\_  
\_\_\_\_\_

- 25 Ali observed different organisms and classified them into 3 groups, A, B and C. He recorded the characteristics of each group in the table shown below. A tick (✓) means that the characteristic is present and a cross (x) means that the characteristic is absent.

Group	Change in size	Make its own food	Reproduce	Move from place to place on its own
A	✓	✓	✓	x
B	✓	x	✓	x
C	✓	x	✓	✓

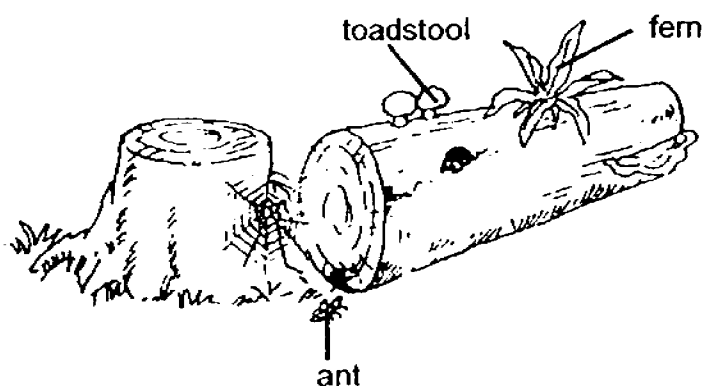
- (a) Which of the above groups is the Fungi group? [2]  
Give reasons for your choice.

---



---

- (b) Based on Ali's table, classify the 3 organisms (ant, toadstool and fern) below into groups A, B and C. [1]



Group A	Group B	Group C

	3
--	---

26 The table below shows the characteristics of animals X, Y and Z.

Characteristics	Animal		
	X	Y	Z
Has hair as outer covering	Yes	No	Yes
Has dry scaly skin	No	Yes	No
Lays eggs	Yes	Yes	No

(a) Based on the information above, state one similarity between animals X and Y. [1]

---

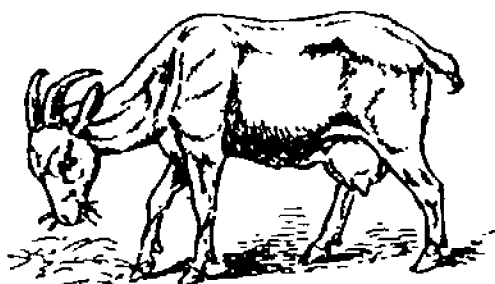


---

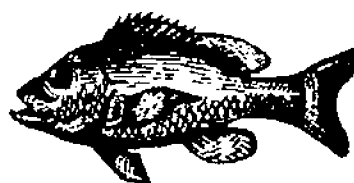
(b) Which of the following can be an example of animal Z?

Place a tick (✓) in the box provided.

[1]



P

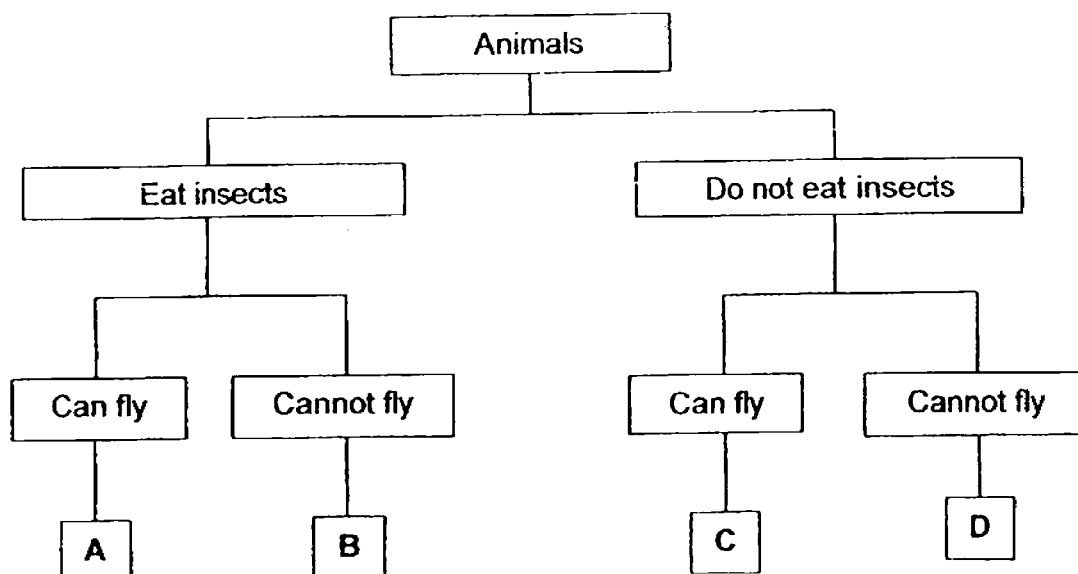
☐


Q

☐

	2
--	---

27 Study the classification chart below.



(a) Describe Animal A based on the classification chart above. [1]

---

---

(b) State one difference between Animal B and Animal C. [1]

---

---

- 28** Joseph planted some sunflower seeds and recorded the height of the seedlings in the table below.

Day	Height of seedling (cm)
1	0
3	4
7	8

- (a)** From the table above, what was observed about the height of the seedlings from Day 1 to Day 7? [1]

---

---

- (b)** What characteristic of living things does Joseph's observation show? [1]

---

---

**End of Booklet B**

	2
--	---

YEAR : 2016  
 LEVEL : PRIMARY 3  
 SCHOOL : MARIS STELLA HIGH  
 SUBJECT : SCIENCE  
 TERM : SA1

Booklet A

Q1	Q2	Q3	Q4	Q5	Q6	Q7	Q8	Q9	Q10
1	4	4	3	3	3	4	2	3	4
Q11	Q12	Q13	Q14	Q15	Q16	Q17	Q18	Q19	Q20
2	2	4	4	3	1	3	3	3	3

Booklet B

Q21 (a) Group X : Give birth to young alive.

Group Y : Lay eggs.

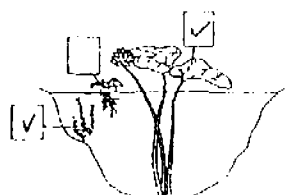
(b) Group Y.

Q22 (a) (i) Both are flowering plant.

(ii) Both are land plant.

(b) F is a land plant but G is not a land plant.

(c)



Q23 (a) Animal X can be classified in the group fish.

(b) Animal X have fins so it can be classified in the group fish.

(c) Similarity : Both have eyes.

Difference : Animal X have fins but animal Y does not.

- Q24 (a) Group X : Reproduce by seeds / plant.  
Group Y : Reproduce by spores / fungi.  
(b) They both grow on dead or living organisms.

- Q25 (a) B. Because it does not make its own food and cannot move from place to place by itself.

(b)

Group A	Group B	Group C
Fern	Toadstool	Ant

- Q26 (a) Both lay eggs.

- (b) P  
☒

- Q27 (a) Animal A eat insects and can fly.  
(b) Animal B eat insects but animal C do not eat insects.

- Q28 (a) The height increased from day 1 to day 7.  
(b) Living things can grow.

End